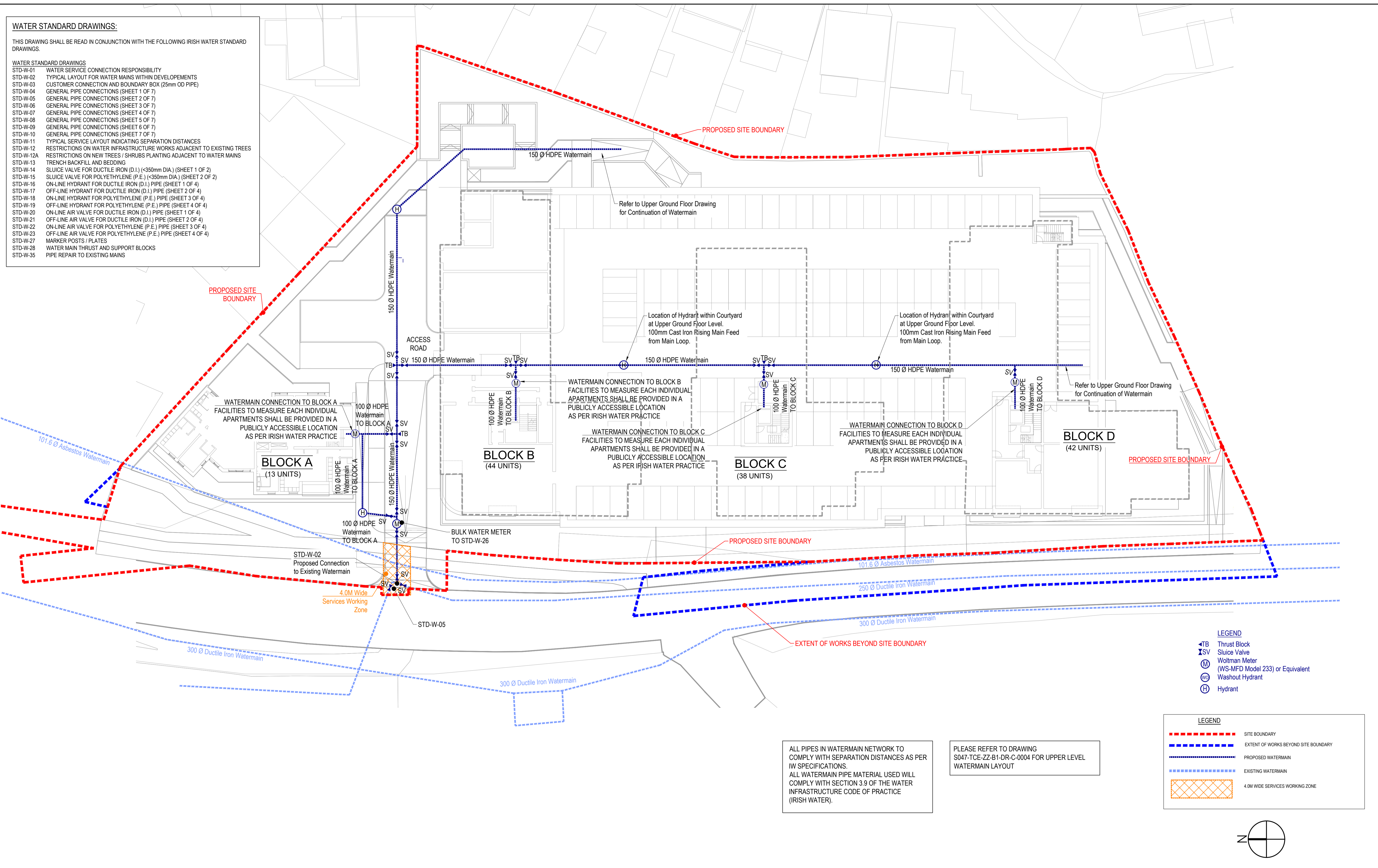


WATER STANDARD DRAWINGS:

THIS DRAWING SHALL BE READ IN CONJUNCTION WITH THE FOLLOWING IRISH WATER STANDARD DRAWINGS.

- WATER STANDARD DRAWINGS
- STD-W-01 WATER SERVICE CONNECTION RESPONSIBILITY
- STD-W-02 TYPICAL LAYOUT FOR WATER MAINS WITHIN DEVELOPMENTS
- STD-W-03 CUSTOMER CONNECTION AND BOUNDARY BOX (25mm OD PIPE)
- STD-W-04 GENERAL PIPE CONNECTIONS (SHEET 1 OF 7)
- STD-W-05 GENERAL PIPE CONNECTIONS (SHEET 2 OF 7)
- STD-W-06 GENERAL PIPE CONNECTIONS (SHEET 3 OF 7)
- STD-W-07 GENERAL PIPE CONNECTIONS (SHEET 4 OF 7)
- STD-W-08 GENERAL PIPE CONNECTIONS (SHEET 5 OF 7)
- STD-W-09 GENERAL PIPE CONNECTIONS (SHEET 6 OF 7)
- STD-W-10 GENERAL PIPE CONNECTIONS (SHEET 7 OF 7)
- STD-W-11 TYPICAL SERVICE LAYOUT INDICATING SEPARATION DISTANCES
- STD-W-12 RESTRICTIONS ON WATER INFRASTRUCTURE WORKS ADJACENT TO EXISTING TREES
- STD-W-12A RESTRICTIONS ON NEW TREES / SHRUBS PLANTING ADJACENT TO WATER MAINS
- STD-W-13 TRENCH BACKFILL AND BEDDING
- STD-W-14 SLUICE VALVE FOR DUCTILE IRON (D.I.) (<350mm DIA.) (SHEET 1 OF 2)
- STD-W-15 SLUICE VALVE FOR POLYETHYLENE (P.E.) (<350mm DIA.) (SHEET 2 OF 2)
- STD-W-16 ON-LINE HYDRANT FOR DUCTILE IRON (D.I.) PIPE (SHEET 1 OF 4)
- STD-W-17 OFF-LINE HYDRANT FOR DUCTILE IRON (D.I.) PIPE (SHEET 2 OF 4)
- STD-W-18 ON-LINE HYDRANT FOR POLYETHYLENE (P.E.) PIPE (SHEET 3 OF 4)
- STD-W-19 OFF-LINE HYDRANT FOR POLYETHYLENE (P.E.) PIPE (SHEET 4 OF 4)
- STD-W-20 ON-LINE AIR VALVE FOR DUCTILE IRON (D.I.) PIPE (SHEET 1 OF 4)
- STD-W-21 OFF-LINE AIR VALVE FOR DUCTILE IRON (D.I.) PIPE (SHEET 2 OF 4)
- STD-W-22 ON-LINE AIR VALVE FOR POLYETHYLENE (P.E.) PIPE (SHEET 3 OF 4)
- STD-W-23 OFF-LINE AIR VALVE FOR POLYETHYLENE (P.E.) PIPE (SHEET 4 OF 4)
- STD-W-27 MARKER POSTS / PLATES
- STD-W-28 WATER MAIN THRUST AND SUPPORT BLOCKS
- STD-W-35 PIPE REPAIR TO EXISTING MAINS

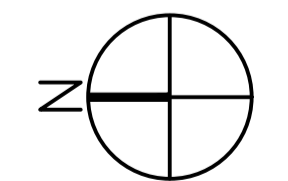


- LEGEND**
- ⊥TB Thrust Block
 - ⊥SV Sluice Valve
 - ⊙M Woltman Meter (WS-MFD Model 233) or Equivalent
 - ⊙W Washout Hydrant
 - ⊙H Hydrant

- LEGEND**
- SITE BOUNDARY
 - EXTENT OF WORKS BEYOND SITE BOUNDARY
 - PROPOSED WATERMAIN
 - EXISTING WATERMAIN
 - 4.0M WIDE SERVICES WORKING ZONE

ALL PIPES IN WATERMAIN NETWORK TO COMPLY WITH SEPARATION DISTANCES AS PER IW SPECIFICATIONS.
ALL WATERMAIN PIPE MATERIAL USED WILL COMPLY WITH SECTION 3.9 OF THE WATER INFRASTRUCTURE CODE OF PRACTICE (IRISH WATER).

PLEASE REFER TO DRAWING S047-TCE-ZZ-B1-DR-C-0004 FOR UPPER LEVEL WATERMAIN LAYOUT



Notes:
For setting out refer to Architects drawings.
This drawing shall be read in conjunction with all other Architectural and Engineering drawings and all other relevant drawings and Specifications.
DO NOT SCALE FROM THIS DRAWING. Use figured dimensions only.
Verify dimensions on site and report any discrepancies to the author immediately.
This drawing is copyright © and must not be reproduced, transmitted or stored in any form without the written permission of Torque Consulting Engineers Limited except as agreed for use on the project for which the document was originally issued.

Rev	Dm	Chkd	Amendments	Date
P04	DG	AS	ISSUED FOR PLANNING	22/04/2022
P03	OM	AS	ISSUED FOR PLANNING	11/04/2022
P02	OM	AS	ISSUED FOR PLANNING	28/03/2022
P01	OM	AS	ISSUED FOR PLANNING	06/09/2021

Rev	Dm	Chkd	Amendments	Date

Architect HORAN RAINSFORD ARCHITECTS
Project SANDYFORD ROAD SHD
Title SITE DRAINAGE - PROPOSED WATERMAIN LAYOUT LOWER GROUND FLOOR LEVEL
Drg No: S047-TCE-ZZ-B1-DR-C-0003 Revision: P04
Scale: 1:250 Date: 06/08/2021 Status: -
Dm By: OM Chkd By: AS Aprvd By: KM

FOR PLANNING

Architect HORAN RAINSFORD ARCHITECTS
Project SANDYFORD ROAD SHD
Title SITE DRAINAGE - PROPOSED WATERMAIN LAYOUT LOWER GROUND FLOOR LEVEL
Drg No: S047-TCE-ZZ-B1-DR-C-0003 Revision: P04
Scale: 1:250 Date: 06/08/2021 Status: -
Dm By: OM Chkd By: AS Aprvd By: KM

TORQUE
CONSULTING ENGINEERS
CIVIL & STRUCTURAL
3rd Floor
The Glasshouse
11 Coke Lane
Dublin 7
D07 WNP2
Ireland
T: +353 (0)1 4853933
E: contactus@tcel.ie
W: www.tcel.ie